



Solutions for Higher Education

 Google Cloud



Solutions for Higher Education

Bring out the best in your students, researchers and staff with innovative solutions from Google Cloud. Our higher education solutions meet your unique needs: they integrate with your existing infrastructure and are available through our predictable pricing model.

Student Success Services

Attract and retain your current students and the next generation

- Reimagine enrollment and admissions management. Enable intelligent admission processing and optimize financial aid distribution to achieve your target recruiting goals around tuition revenue, academic performance, and diversity.
- Maximize academic outcomes and student retention with an AI-powered tutor or virtual agents for 24/7 personalized support in more than 120 languages.
- Break down silos and get actionable insights from your teaching and learning data by pulling insights from data across your LMS, SIS and LTI systems. Take advantage of Google's smart analytics and AI to predict academic performance and intervene to prevent drop-outs.
- Ensure student safety and campus health with contact tracing, vaccine distribution, digital immunization credential management, and isolation services. Empower your teams with self-service real-time analytics to make data-driven decisions at anytime.

Michigan State University
Enrollment increase by over 20% and generated +\$5M in additional net tuition revenue in the first year of launch


University of Minnesota Rochester
Building NXT GEN MED on Student Success Services to reimagine the education of future healthcare leaders.

Strategic Education
24/7 virtual agents handles +93% of live chat volume, suggests learning paths, handles enrollment operations

Infrastructure Modernization


Optimize operations and ensure the best experience for remote working and hybrid learning

- Improve collaboration, streamline instruction, and keep your learning environment secure with Google Workspace for Education.
- Automate business processes without coding with AppSheet. Improve your TCO from IT Operations with fully-managed hybrid cloud services. Avoid vendor lock-in & licensing fees.
- Reduce costs, increase agility, and foster innovation by modernizing and migrating your mainframe applications, virtual desktop instances and other legacy systems.



The relationship with Google Cloud is a key step in Georgetown's strategy to continuously modernize its information technology infrastructure to support the evolving needs of our students, faculty and researchers.

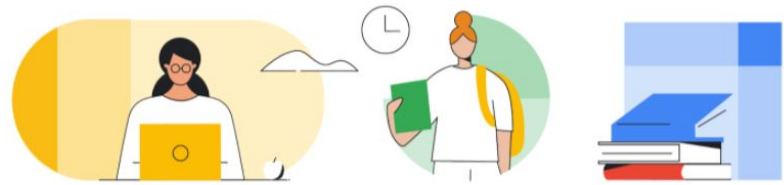
Judd Nicholson
Vice President & CIO



Manhattan College
Migrated Banner and Data Warehouse to Google Cloud to manage them more effectively at a fraction of the cost

Brown University
Uses Google Workspace for Education to maximize collaboration and assure secure information sharing yielding lower IT cost

Georgetown University
Migrated Central IT and HPC infrastructure to Google Cloud and save \$xM/year in TCO



Solutions for Higher Education

Bring out the best in your students, researchers and staff with innovative solutions from Google Cloud. Our higher education solutions meet your unique needs: they integrate with your existing infrastructure and are available through our predictable pricing model.



Student Success Services

Attract and retain your current students and the next generation

- **Reimagine enrollment and admissions management.** Enable intelligent admission processing and optimize financial aid distribution to achieve your target recruiting goals around tuition revenue, academic performance, and diversity.
- Maximize academic outcomes and student retention with an **AI-powered tutor or virtual agents for 24/7 personalized support** in more than 120 languages.
- Break down silos and get actionable **insights from your teaching and learning data** by pulling insights from data across your LMS, SIS and LTI systems. Take advantage of Google's smart analytics and AI to predict academic performance and intervene to prevent drop-outs.
- **Ensure student safety and campus health** with contact tracing, vaccine distribution, digital immunization credential management, and isolation services. Empower your teams with self-service real-time analytics to make data-driven decisions at anytime.

Michigan State University

Enrollment increase by over 20% and generated +\$5M in additional net tuition revenue in the first year of launch

University of Minnesota Rochester

Building NXT GEN MED on Student Success Services to reimagine the education of future healthcare leaders.

Strategic Education

24/7 virtual agents handles +93% of live chat volume, suggests learning paths, handles enrollment operations



Infrastructure Modernization

Optimize operations and ensure the best experience for remote working and hybrid learning

- **Improve collaboration**, streamline instruction, and **keep your learning environment secure** with Google Workspace for Education.
- **Automate business processes without coding** with AppSheet. Improve your TCO from IT Operations with **fully-managed hybrid cloud services**. Avoid vendor lock-in & licensing fees.
- **Reduce costs, increase agility, and foster innovation** by modernizing and migrating your mainframe applications, virtual desktop instances and other legacy systems.



The relationship with Google Cloud is a key step in Georgetown's strategy to continuously modernize its information technology infrastructure to support the evolving needs of our students, faculty and researchers.

Judd Nicholson

Vice President & CIO



Manhattan College

Migrated Banner and Data Warehouse to Google Cloud to manage them more effectively at a fraction of the cost

Brown University

Uses Google Workspace for Education to maximize collaboration and assure secure information sharing yielding lower IT cost

Georgetown University

Migrated Central IT and HPC infrastructure to Google Cloud and save \$xM/year in TCO



High Performance Computing (HPC)

Accelerate time to insight, reduce cost of reproducibility, and integrate easily with schedulers

- **Cut the queues** by gaining dynamic access to storage, computing and machine learning services. Leverage pre-emptible VMs with a fixed 80% discount for vCPUs and up to 50% off for GPUs and TPUs.
- **Integrate with the most common schedulers** for research like Slurm, PBS, HTCondor, GridEngine. Use Google Kubernetes Engine (GKE) for **fully-managed containerization**.
- Provision a “**HPC-in-a-box**” environment with CloudyCluster for a user-friendly implementation that provides the power of Google Cloud with simplicity.

Clemson University

Dynamically bursts 2.1 million Pre-emptible vCPUs to process 210TB of video within 8 hours for climate research

Rubin Observatory

First ever cloud-based data facility processing 500 petabytes of data to unlock greater insights of the universe

Broad Institute

Replaced its in-house genome sequence analysis with GCP to process data +400% faster



Life Science Research

Drive breakthroughs and attract top research talent

- Use Cloud Healthcare APIs to accelerate your healthcare solution development with **fully managed, enterprise-scale, HL7® FHIR®, HL7® v2, and DICOM® APIs**.
- Leverage the Healthcare Natural Language API to **derive insights from medical text** and the Life Sciences API to **process bioinformatics data** with low total cost.
- Protect your healthcare data while meeting industry-specific security compliance requirements.
- **Ingest, store, and aggregate all types of healthcare data in its original format.** Leverage Cloud Healthcare API's NLP to **de-identify your data** for analytics and AI applications.
- Build your next-generation **Clinical Data Warehouse (CDW)** with us to accelerate processing times and save costs.
- Use **Real-World Insights (RWI)** to accelerate drug development and clinical trials. RWI extends the FDA's existing open source platform with enhanced security and interoperability with Google Cloud.
- Google Cloud is part of the **NIH STRIDES, NSF CloudBank** and **NSF MSI programs**



The combination of genotype information and health data enables genetic discoveries that improve our understanding of disease mechanisms, creating medical breakthroughs.

Mari Kaunisto

Communication Director & Geneticist

FIMM

Colorado University

Migrated CDW to GCP to process +6 million records daily 93% faster than their previous Oracle DW at a fraction of cost

Emory University

Process ICU healthcare data in real-time to predict the onset of sepsis up to 12 hours prior to clinical recognition

UNC Health

Used RWI to go from protocol design to study launch in less than 2 months



Security and Professional Services

- **Automate security and data governance** to ensure guard rails and monitoring mapped to compliance requirements (HIPAA, FedRAMP, NIST 800-53, NIST CSF, GDPR, PCI DSS). Security alerts, audit events and logs are integrated with your existing SIEMs (Splunk, Sumo Logic, Elastic Search, etc).
- **Automate research sandbox provisioning** to provide maximum control and governance granularity for data ingestion, processing, and sharing with internal and external collaborators.
- Enrich your logs with VirusTotal and **investigate Petabytes of data for real-time threats and compliance risks** in a easy and **cost-effective** manner via **Chronicle**.





Thank you for downloading this Google Cloud resource! Carahsoft is the public sector distributor for Google Cloud government solutions available via NASPO ValuePoint, GSA Schedule, and other contract vehicles.

To learn how to take the next step toward acquiring Google Cloud's solutions, please check out the following resources and information:



For additional resources:
carah.io/GoogleCloudResources



For upcoming events:
carah.io/GoogleCloudEvents



For additional Google Cloud solutions:
carah.io/GoogleCloudSolutions



For additional higher education solutions:
carah.io/HigherEducation



To set up a meeting:
Google-Sales@carahsoft.com
844-55-GOOGLE



To purchase, check out the contract vehicles available for procurement:
carah.io/GoogleCloudContracts