

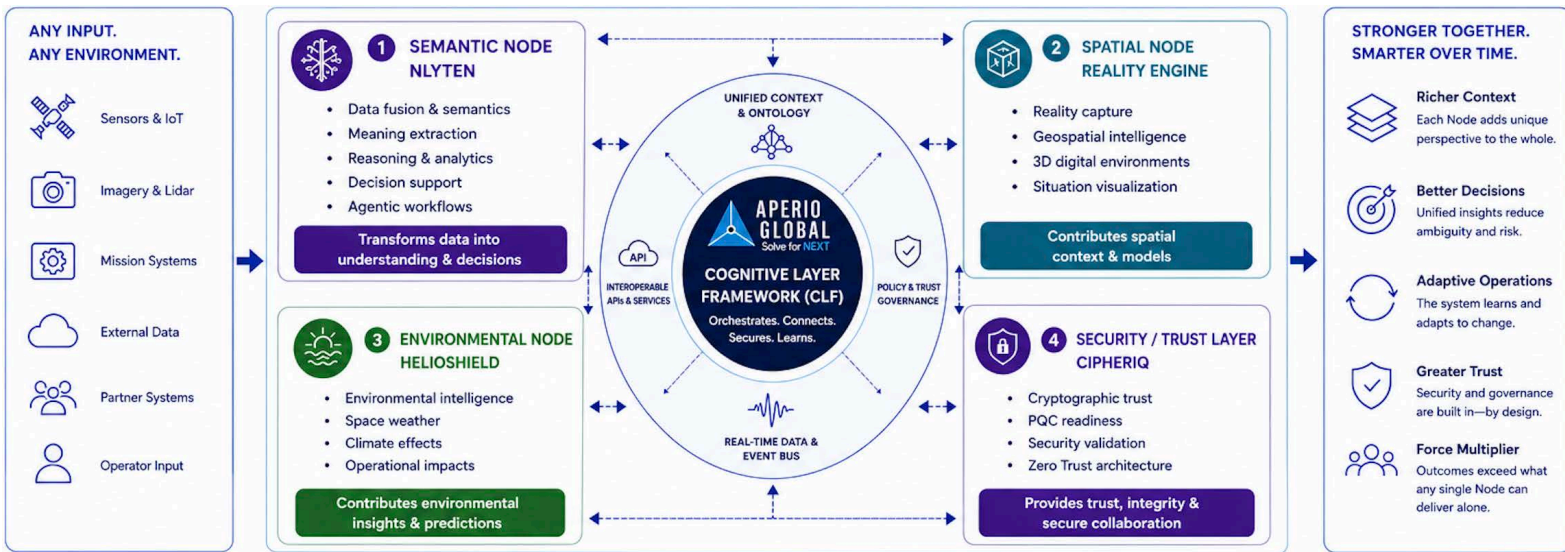
Trusted Cognition for Mission-Critical Environments

DATA → GOVERNED CONTEXT → DECISION CONFIDENCE

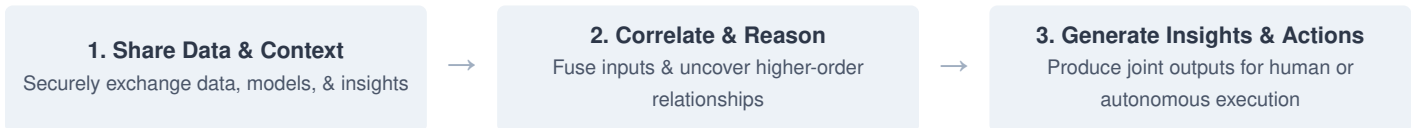
Aperio Global delivers governed cognitive infrastructure that transforms fragmented data, multi-domain environments, complex signals, and modern operational workflows into absolute decision confidence.

THE COGNITIVE LAYER FRAMEWORK (CLF)

Enabling secure data exchange, shared context, and collective intelligence that makes the system smarter and more effective over time.



HOW THE NODES WORK TOGETHER



CONTINUOUS LEARNING LOOP



CORE CAPABILITY PILLARS

COGNITIVE INFRASTRUCTURE

- Data conditioning
- Decision confidence
- Policy-governed movement

CYBER SECURITY + ZERO TRUST

- Threat hunt
- Secure architecture
- Mission assurance

DATA SCIENCE + AI

- Agentic workflows
- Multi-modal insight
- Governed AI

SPACE + MULTI-DOMAIN

- Space Domain Awareness support
- Mission data fusion
- Dynamic planning

PHYSICAL AI + SPATIAL INTEL

- Reality engine
- 3D reconstruction
- Environment awareness

PRODUCT PORTFOLIO

Aperio's modular software suite delivers targeted mission readiness without diluting core enterprise context.

	<p>Sensemaking Platform: Ingests, conditions, analyzes, and translates fragmented data into mission-relevant intelligence. Fuses multi-source feeds to move operational teams from raw signals to total visual clarity.</p> <p>CORE FEATURES & CAPABILITIES</p> <ul style="list-style-type: none"> • Multi-source data fusion (SIGINT, IMINT, Cyber, Open Source, and Human Reports) • Advanced knowledge graph architecture with integrated rules-based tradecraft • Automated explainable insights and ranked recommended action matrices
	<p>Spatial Intelligence & Physical AI: Transforms verified spatial captures, point clouds, and metadata into trusted digital twins. Built for immersive tactical planning, asset preservation, and mission simulation.</p> <p>CORE FEATURES & CAPABILITIES</p> <ul style="list-style-type: none"> • High-fidelity capture with automated geometric 3D reconstruction and provenance • AI-assisted object detection, environmental labeling, and contextual data enrichment • Photorealistic spatial experiences tailored for training, visualization, and command operations
	<p>Protective Intelligence: Delivers continuous mission assurance and anomaly awareness across space, atmospheric, and terrestrial operating layers. Anticipates external systemic risks before they compromise active operations.</p> <p>CORE FEATURES & CAPABILITIES</p> <ul style="list-style-type: none"> • Realtime-tracking of space weather, solar activity (flares, CME), and ionospheric conditions • Derived probabilistic forecasting, AI pattern matching, and causal insight identification • Quantified asset exposure dashboards with automated, actionable risk mitigation timelines
	<p>Post-Quantum Readiness: Discovers, prioritizes, and mitigates cryptographic, cyber, and quantum-era exposure risks. Builds systemic trust directly into critical networks by design.</p> <p>CORE FEATURES & CAPABILITIES</p> <ul style="list-style-type: none"> • Comprehensive automated discovery and inventory of active network cryptographic assets • AI-powered continuous risk scoring, vulnerability mapping, and strict policy alignment • Targeted Post-Quantum Cryptography (PQC) migration planning and validation frameworks

WHY APERIO GLOBAL

- **Fortifying the Environment:** We do not replace the human decision owner. We engineer and secure the data environment surrounding the choice to enable maximum precision.
- **Mission-Centric Provenance:** Built directly for high-consequence operations where velocity, verifiable truth, and clear governance are non-negotiable.
- **Integrated Tier-1 Ecosystem:** Architected to deploy seamlessly alongside industry standard-setters including NVIDIA, Dell Technologies, WWT, and SandboxAQ.

REPRESENTATIVE EXPERIENCE

- **U.S. Secret Service:** Operational modernization and multi-source protective intelligence platform support.
- **DHS / USCIS:** Advanced cyber operations, custom AI/ML model deployment, and Security Operations Center (SOC) engineering.
- **Space Force & SDA:** Space Domain Awareness concept validation and high-consequence multi-domain technology planning.

FEDERAL CONTRACTING PROFILE & PROCUREMENT PATHWAYS

Corporate Entity:

Aperio Global, LLC

Business Designation:

Small Disadvantaged Business (SDB);
SBA 8(a) Graduate/Participant Focus

Headquarters: Northern Virginia

Quality Standards & Markers:

- ISO 9001:2015 (Quality Management)
- ISO 27001:2018 (Information Security)
- ISO 20000-1:2018 (IT Service Mgmt)
- CMMI Services Level 3 Rated
- DCAA-Approved Accounting System

Primary Contract Vehicles:

- GSA MAS (Multiple Award Schedule)
- GSA HACS (Highly Adaptive Cyber Services)
- Carahsoft Federal Procurement Pathways
- Specialized Partner-Led Teaming Channels

UEI: AVAILABLE VIA MICRO SITE • CAGE: AVAILABLE UPON REQUEST • PRIMARY NAICS: 541511, 541512, 541715, 541330