






# Rocket Enterprise Analyzer


Thank you for downloading this Rocket Software resource. Carahsoft is a Public Sector Distributor of Rocket Software solutions available NASPO, Omnia and other contract vehicles.


To learn how to take the next step toward acquiring Rocket Software's solutions, please check out the following resources and information:


 For additional resources:  
[carah.io/rocketresources](https://carah.io/rocketresources)

 For upcoming events:  
[carah.io/carahsoftevents](https://carah.io/carahsoftevents)

 For additional Rocket Software solutions:  
[carah.io/rocketsolutions](https://carah.io/rocketsolutions)

 For additional cybersecurity solutions:  
[carah.io/cybersecurity](https://carah.io/cybersecurity)

 To set up a meeting:  
[rocketsoftware@carahsoft.com](mailto:rocketsoftware@carahsoft.com)  
888-662-2724

 To purchase, check out the contract vehicles available for procurement:  
[carah.io/rocketcontracts](https://carah.io/rocketcontracts)



# Rocket® Enterprise Analyzer

(formerly a Micro Focus® product)



Rocket® Enterprise Analyzer delivers a wide array of tools and content to support better application understanding — from graphical CIO dashboards to granular developer programs and field insight. This static code analysis tool set, comprised of Rocket Enterprise Analyzer, Rocket Enterprise View\* and Business Rule Manager\*, also scales to manage complex, multi-million line-of-code application portfolios. Rocket Enterprise Analyzer use cases include Application Portfolio Management (APM), modernization portability and risk assessment, merger and acquisition, activity code quality, application development and maintenance, documentation, and business rule mining.

## The Business Challenge

Every major business process — from financial reporting to customer management — depends on software applications. They must be extremely efficient, highly stable, compliant and flexible enough to support new business requirements. But these applications have been developed over many years, across diverse environments, and enhanced under tight time pressures. Documentation is rarely current and system architects have often moved on. The complexity of these systems and limited insight into the application portfolio can lead to:

- 
**Slow turn-around on business needs**  
 Applications are too inflexible to be adapted quickly and without risk. In addition, business users and IT can't translate needs into development requirements.
- 
**Inefficient development processes**  
 Global development teams spend up to 80% of their budgets on maintenance activities, diverting resources from the newer, high-value services the business demands.
- 
**Inconsistency of information**  
 The ambiguity between the analysis and development phases inevitably leads to errors, increasing the cost of change and impact to the IT budget.



### Difficulty in selecting modernization projects

Businesses recognize the value of modernizing their application portfolios, but cannot do so without the insight to prioritize and scope these high-value activities.



### Poor management control

Executives cannot assign resources to work on what matters most to the business.

## How Rocket EA Can Help

Rocket Enterprise Analyzer is a comprehensive analysis solution aimed at enterprise applications. It enables a deeper understanding of application portfolios and provides centralized business and technical insight into core applications with information stored in a secure, centralized repository. This enables global IT teams to identify, prioritize and execute development activities that realign applications with current business requirements.

## Key Benefits

Business users and executives can expect:



### Improved governance

Managers use intuitive dashboards to regain control of the business applications and tracking key performance indicators.



### Delivery of quality applications

Build or reuse queries to locate issues without disrupting stability.

For architects, analysts, and development professionals:



### Accelerated modernization projects

Isolates business logic into reusable components and helps re-architect systems, eliminating low quality or redundant code.



### Rich documentation creation

To recover lost knowledge on even the most complex of applications. This supports development and design decisions while improving productivity.



### Improved team effectiveness

Ease of use enables even new joiners to become 'instant experts', increasing effectiveness and confidence when making code changes.



### Enterprise level scalability

Manage complex application portfolios that include hundreds of millions of lines of code.



### Better business visibility

Analysts, architects and executives get a business perspective on their applications.

Rocket Enterprise Analyzer enables IT management, business analysts and developers to:

40%

Deliver application development and modernization projects up to 40% faster.

15%

Reduce the cost of application maintenance by 15%.



Understand the value of mainframe applications.



Automate the discovery and documentation of hidden application logic.



Improve application quality by measuring and managing code change.



Add code analysis and enforce coding standards as part of your Continuous Integration (CI) pipeline.



Demystify large, complex code bases and application portfolios.

# Feature Overview

## Enterprise-class application repository

Rocket Enterprise is built on a powerful, enterprise class repository that stores application information in a central location. Powerful administration tools enable:

- Remote access to mainframe source control systems synchronizing source modules into the repository on change.
- Automatic repository updates to ensure this remains the 'source of truth' for development and analyst teams.
- Integration with data coming from third-party sources such as HR and ERP systems.

## Comprehensive application support

Enables enterprise applications to be analyzed with support for:

- Multiple IBM® mainframe and other COBOL dialects.
- Enterprise PL/I, JCL, IBM® High Level Assembler and Natural Adabas, and JAVA.
- CICS® and IMS™ based applications including support for BMS and MFS.
- Data access including QSAM, VSAM and RDMS primitives.

## In-depth analysis tools

Enable analysis of areas of interest within code and across the application portfolio including:

- Application and program level understanding using extensive metrics, reports, diagrammatic views and querying tools.
- Comprehensive tools to analyze and determine the impact of making a change to an application inventory, tracing impacts through code, data, report and application interfaces.
- Portability assessment to help assess portfolio inventory, key metrics and risk areas for application re-platform projects.
- Quality assessment with standard code quality queries to serve as guidance to a code quality practice in both development and maintenance phases.

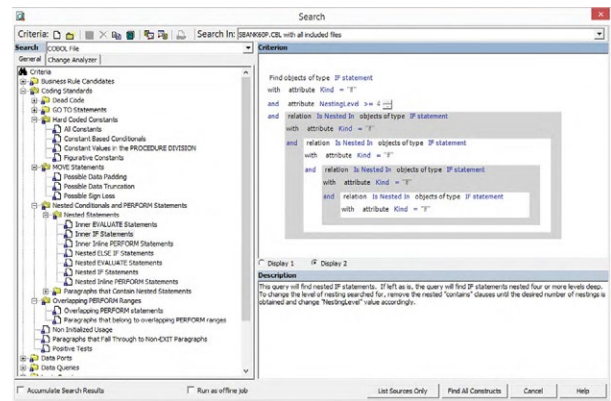


Fig 2. Pre-built query library that can be fully customized.

## Code slicing facility

Enables developers and architects to create new, re-usable components by separating business logic and computations into new callable objects. This allows simplifying programs complexity and exposing the needed logic for testing, documentation and creating new APIs from existing code.

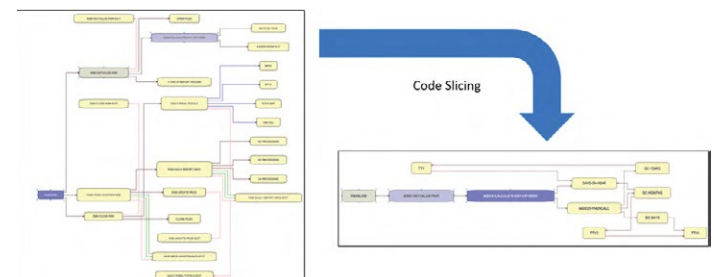
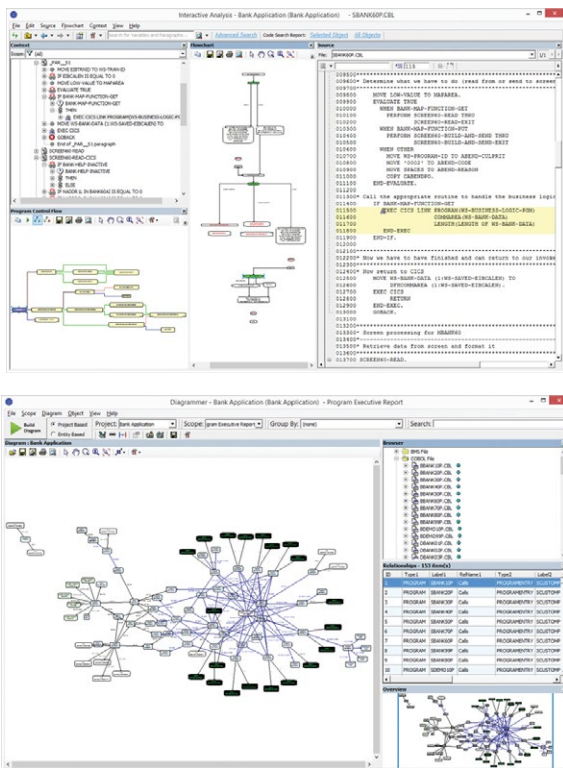


Fig 3. Powerful code slicing capabilities to create reusable components from existing business logic.

Fig 1. Interactive analysis and application visualization.



### Powerful query facilities

To locate areas of interest within code. A pre-built query library includes a rich set of common queries to provide a head-start when investigating common development tasks. These are fully customizable and the results can be shared with application developers to remove ambiguity when making code changes.

### Application visualization

Rich, synchronized, always-current, and interactive visualizations ensure that developers can get up to speed on even the most complex applications by visualizing:

- How applications fit into the inventory and where the dependencies exist.
- Program structure with fast navigation to areas of interest.
- Program and data flow through an application and within source modules to trace the impact of change.

### Robust report capabilities

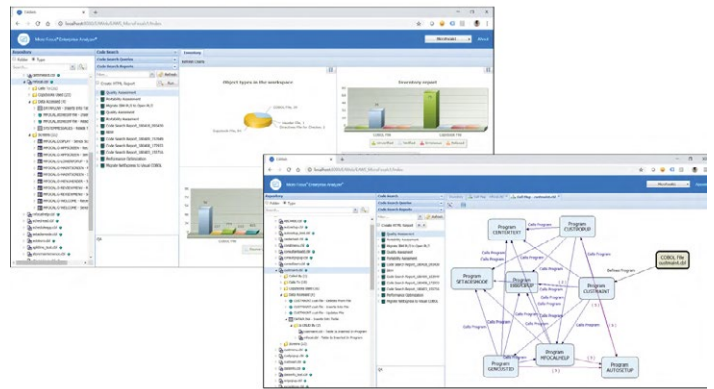
Generate reports to manage and monitor modernization projects, coding standards, quality metrics and much more. Rocket Enterprise Analyzer offers a highly customizable framework to create reports with the latest information to give you control over your projects.

### Integrated to development tool chain

Built-in integration with Rocket Enterprise Developer. Batch interface and REST API available for integration with other tools as well as a Jenkins plugin for seamless integration to Jenkins.

### Easily accessible application knowledge

Developers or any interested party have instant access to application knowledge through an intuitive web interface. This powerful 'Google-style' search interface is accessible in the available Rocket Enterprise Analyzer repositories. This means fast roll-out to development teams and ensures they have the knowledge available to quickly and confidently make application changes.



**Fig 4.** Fast access to knowledge through an easy-to-use web portal.

## System Requirements

Available for use on premises or on all major cloud providers including AWS, Azure and GCP.

Rocket Enterprise Analyzer server and client tools are available on the following 64 bit operating systems:	<ul style="list-style-type: none"><li>• Windows 10,11</li><li>• Windows Server 2016, 2019, 2022</li></ul>
Rocket Enterprise Analyzer repositories can be created using the following 32/64 bit RDBMS platforms:	<ul style="list-style-type: none"><li>• PostgreSQL 13 or higher</li><li>• Support for creating workspaces on Oracle and IBM® Db2® has been phased out. Recommended databases are PostgreSQL and Microsoft SQL</li><li>• Microsoft SQL Server 2014, 2016, 2017, 2019 and 2022. (2017 or higher required for Windows 11 and Windows Server 2022).</li><li>• Out-of-the-box PostgreSQL 16 is also provided as an install option</li></ul>
Rocket Enterprise Analyzer web client access requires one of the following browsers:	<ul style="list-style-type: none"><li>• Firefox 3.6 or higher</li><li>• Chrome 6 or higher</li><li>• Internet Explorer 6 or higher</li></ul>

## Product Updates

Choose the right Rocket Enterprise Analyzer option to meet your requirements:



### Analysis REST API and Jenkins Plugin

A new, standard and easy to use Analysis REST API now available for integration with other tools such as Continuous Integration (CI) pipelines. A Jenkins plugin is also available.



### Support for COBOL Security Scans

Rocket Enterprise Analyzer now allows a 1-click creation of a Fortify Static Code Analyzer mobile build session (MBS) for security scans of COBOL applications.



### Enterprise Analyst Developer Client

Provides developers or anyone wishing to access application knowledge with a simple to use web interface. This enables them to search, query and extract information from a centrally maintained enterprise repository.



### Rocket Enterprise Analyzer Analyst Client

Provides all the tools you need to build and maintain enterprise class repositories, plus the client tools to enable analysts to get a deep understanding of application and program architecture. Extensive metrics, reports, diagrammatic views and querying tools support multiple business initiatives including M&A, business/IT alignment, application modernization, development and maintenance.

Two further Rocket Enterprise Analyzer options are available:



### Business Rule Manager

Managers use intuitive dashboards to regain control of the business applications and tracking key performance indicators.



New technical preview for deploying Rocket Enterprise Analyzer Server in a Linux Docker container. Contact your account manager or support engineer to get access.

\*Formerly Micro Focus Products



**Modernization. Without Disruption.™**

Visit [RocketSoftware.com](https://RocketSoftware.com) >

© Rocket Software, Inc. or its affiliates 2024. All rights reserved. Rocket and the Rocket Software logos are registered trademarks of Rocket Software, Inc. Other product and service names might be trademarks of Rocket Software or its affiliates.

Micro Focus® is a registered trademark of Micro Focus IP Development Ltd. Rocket Software is not affiliated with Micro Focus IP Development Ltd.

MAR-9998\_Datasheet\_ESAnalyzer\_V3

[Learn more](#)

