





## DevSecOps Solutions from Any Cloud to Any Edge

Thank you for downloading this Progress Software brochure. Carahsoft is the Distributor for Progress Software solutions available GSA, NASA SEWP V, CMAS, and other contract vehicles.


To learn how to take the next step toward acquiring Progress' solutions, please check out the following resources and information:


 For additional resources:  
[carah.io/progressresources](https://carah.io/progressresources)

 For upcoming events:  
[carah.io/progressesevents](https://carah.io/progressesevents)

 For additional Tanium solutions:  
[carah.io/progresssolutions](https://carah.io/progresssolutions)

 For additional DevSecOps solutions:  
[carah.io/devsecops](https://carah.io/devsecops)

 To set up a meeting:  
[Progress@carahsoft.com](mailto:Progress@carahsoft.com)  
703-871-8548

 To purchase, check out the contract vehicles available for procurement:  
[carah.io/progresscontracts](https://carah.io/progresscontracts)

# DevSecOps Solutions from Any Cloud to Any Edge

---

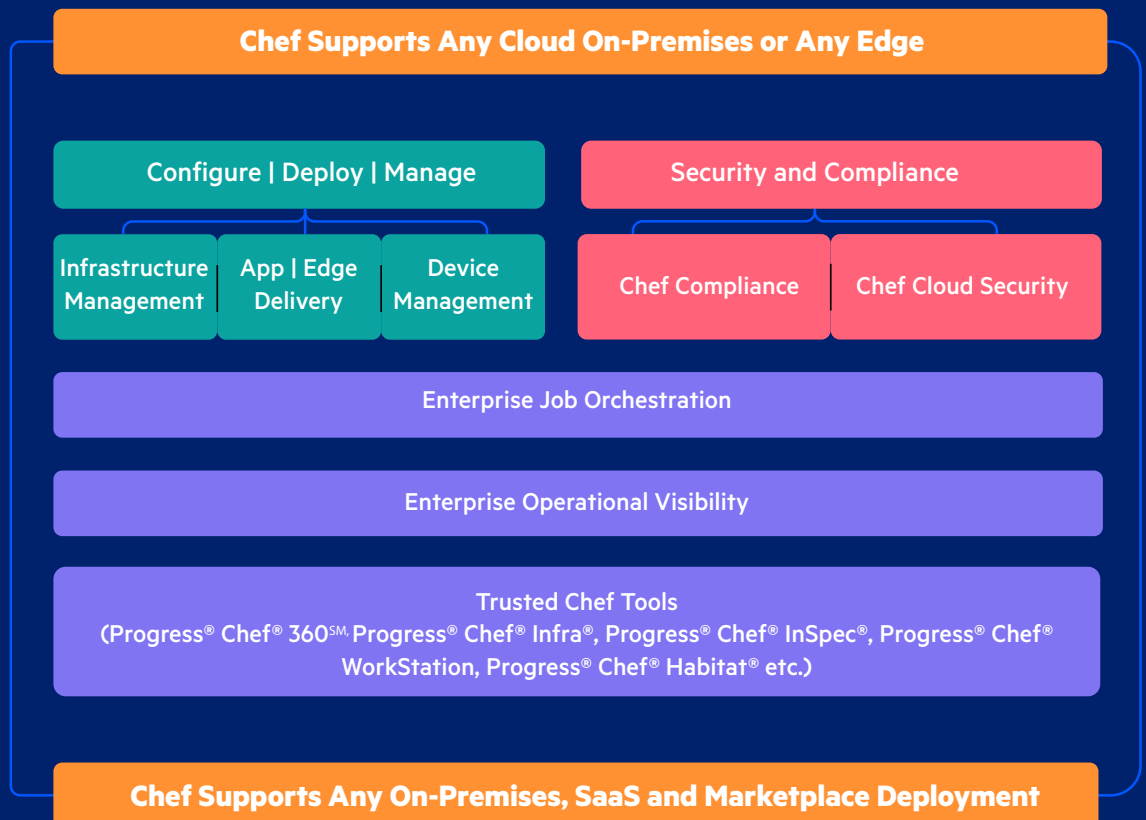
BROCHURE



# Powering DevSecOps from Any Cloud to Any Edge

Progress Chef is a DevSecOps automation platform that enables IT professionals to configure, deploy and manage infrastructures while maintaining continuous compliance and security across the fleet.

With Chef, you can improve your existing process by enabling job orchestration, network device management and application delivery (including to edge devices) while empowering teams to collaborate, contribute and coordinate through a unified interface for fleetwide visibility and control.



→ [www.chef.io](http://www.chef.io)

## Configuration Management



Lighten workloads by managing changing configurations in complex IT environments

# Securely Apply Consistent Configurations in Any IT Environment



Reduce reliance on human resources to address scaling IT complexity

## Configuration Automation with Infrastructure as Code

Chef uses infrastructure as code to manage configurations and system states in on-premises, cloud and hybrid environments regardless of the underlying infrastructure or OS version and architecture. You can perform system configuration to meet standards and policies and continuously check to help protect the systems from inadvertent or intentional changes.



Minimize operational costs by automating infrastructure management

With Chef, you can reconfigure and remediate drifts found during these checks. This way, systems are reinforced and monitored across your infrastructure and teams. Your IT operations teams can have a consolidated, real-time and in-depth view of the state of their fleet posture, no matter the scale or number of devices.

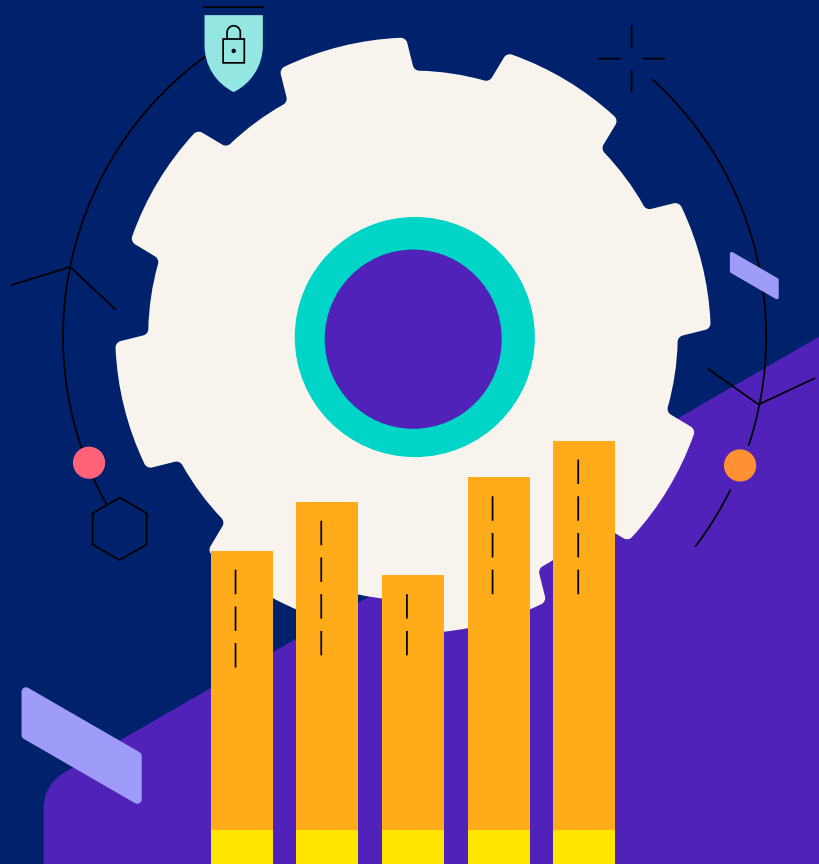


Improve agility in adding new applications and platforms to reduce time-to-market

[→ Learn more about Configuration Management with Chef](#)



Gain customer trust and stakeholder confidence by swiftly resolving drifts, ensuring successful application deliveries



## Compliance Management



Streamline audits to cut time and costs related to regulatory assessments



Foster a secure environment for all stakeholders with continuous compliance



Defend your reputation by proactively mitigating breaches and identifying known vulnerabilities



Lower effort and cost with continuous and timely audit cycles



Handle higher volumes of known vulnerabilities and devices



Integrate compliance and security early to reduce delays



Gain in-depth visibility into the compliance state of your IT fleet

# Maintain Compliance and Prevent Security Incidents Across Heterogeneous IT Fleets

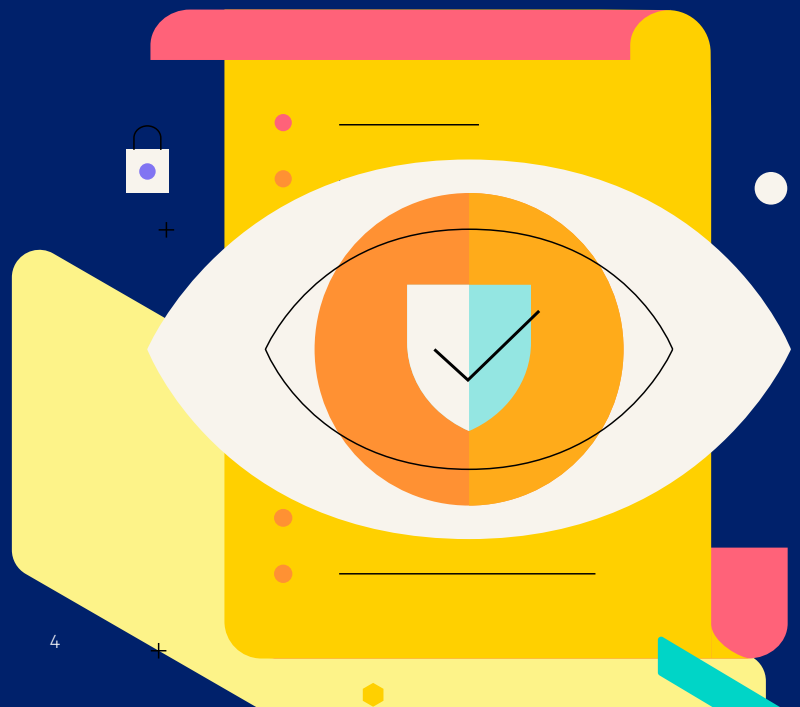
## Compliance Automation with Policy as Code

With Chef, organizations can streamline the compliance of their IT infrastructure, whether on-premises or in the cloud. Chef provides certified, out-of-the-box configuration instructions and policy checks (content) that cater to standard benchmarks such as CIS, DISA-STIGs and internal regulations. You can use these standard-based and customizable content profiles for compliance audits and remediation across diverse IT fleets.

Chef is a single platform for maintaining internal and external policies and standards for infrastructure and application configurations. It also makes it easy and fast for your DevOps teams to pass compliance audits, as opposed to arduous manual processes. This is achieved by faster detection through continuous scans and the capability to automate the remediation process.



[Learn More About Compliance Automation with Chef](#)





Maintain consistency with security policies and ensure timely product launches across hybrid cloud platforms



Reduce breaches by proactively tracking and remediating cloud misconfigurations



Detect and automate remediation of policy drifts in air-gapped environments



Gain extensive visibility into cloud security and compliance posture



Cut costs and boost productivity by implementing Zero-Trust in hybrid environments



Reduce your vulnerability to supply chain attacks by better safeguarding your SBOM

# Extend Your Compliance Efforts to Support the Cloud

## Advanced Cloud Security and Compliance Management Automation

DevSecOps teams like yours can use Chef to scan, monitor and remediate security risks and misconfigurations in your multi-cloud accounts across on-premises and cloud-native environments with standards-based (CIS) audit content. You can also tune baselines to adapt to your organization's requirements and maintain visibility and control across hybrid environments.

You can leverage Chef to scan for security risks in systems across numerous environments (Dev, Pre-Prod, Prod), all systems (Cloud, Kubernetes, VMs, Containers, Windows, Linux), and all clouds (AWS, Azure, Google, Alibaba, and many others). With Chef, you can achieve end-to-end Cloud-native environment configuration and security validation, scan live running containers, and validate K8 settings.

[→ Learn More About Cloud Security with Chef](#)





Change deployment time from weeks to hours



Deploy apps that run in a consistent, reliable and secure manner



Achieve 99.999% successful deployments



Deliver applications on any environment, any device, anywhere



Get real-time visibility of your application delivery status



Rollback easily and reduce testing cycles and application rebuilds

# Deliver Successful Application Outcomes Consistently at Scale

## Define, Package and Deliver Applications and Infrastructure Across On-Premises, Hybrid and Cloud Environments and On the Edge

You can use Chef to help build, deploy and manage applications as code using lightweight, immutable, discrete and portable artifacts. Chef also offers extensive edge device management, including configuration, compliance management and application delivery. With Chef, you can manage dependencies, facilitate flexible and controlled deployments with easy rollbacks and deliver applications on time.



[Learn More About Application Delivery with Chef](#)



## Job Orchestration



Empower DevOps professionals across teams with a unified platform to orchestrate workflows



Streamline workflows for both reactive and planned work



Orchestrate quickly and efficiently for faster time to market



Gain enhanced visibility and control over DevOps workflows



Integrate with the existing suite of DevSecOps products



Reduce the burden of internal skill sets, hiring and vendor tool costs

# Controlled Rollout of Actions – Wherever, Whenever, Whatever

## Orchestrate DevOps Workflows Across Your IT Infrastructure

With Chef, you can perform enterprise job orchestration and automation with immense flexibility, giving you control over three specific dimensions—Wherever, Whenever, Whatever.

This means that you can perform any workload with any payload (Whatever) on any target (Wherever) in your IT fleet at any time, immediate, scheduled or otherwise (Whenever).

Choose between GUI, CLI and API to start your orchestration tasks. You can now use Chef to orchestrate ad-hoc tasks for incident response, service requests or planned tasks for updates, rollouts, patching, compliance, security and application deployment on your IT fleets.

[→ Learn More About Job Orchestration with Chef](#)





## Network Device Management



Become platform-agnostic (Cisco, Broadcom, Check Point and more) and manage network devices with any OS



Gain faster configuration times since no installation is required on target devices



Improve performance compared to in-house solutions due to the agentless architecture



Adapt quickly with existing Chef skills since you do not have to learn specific system architectures



Cut administration costs with reduced network device management

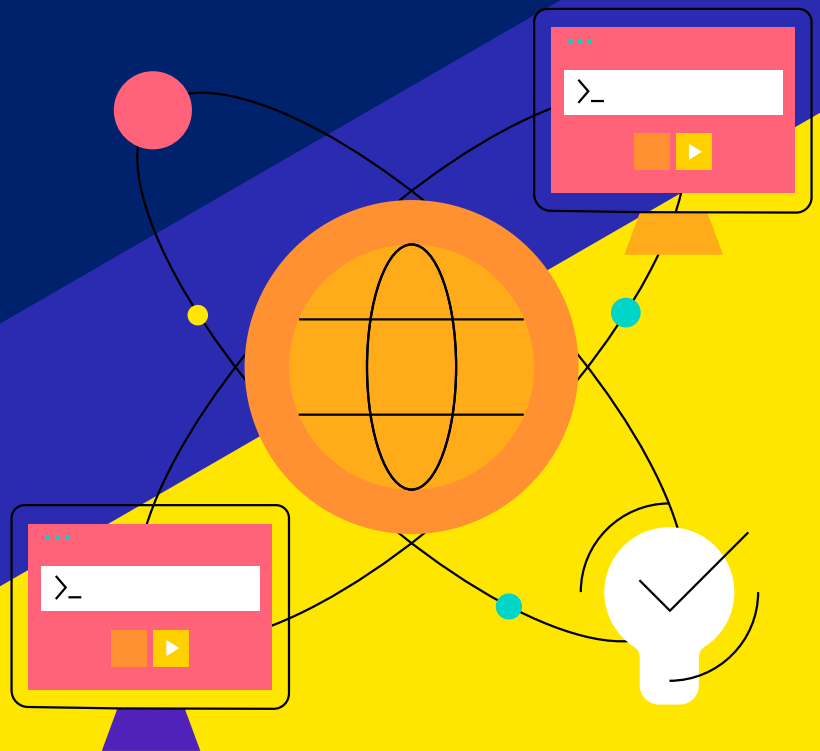
# Manage Devices on Your Network Without Agents

## Agentless Configuration Management for Any Device

Chef provides you with the flexibility to choose agentless network device management. You can opt-in to use the 'target mode' technology of Chef to manage network device configurations without installing agents. This removes the need for specific platform support by enabling the management of the desired state of any system, target or device without needing an agent.

You can now easily manage the desired state of remote systems, edge devices, routers, switches, cloud services, SaaS services and applications with compatible native resources or through custom resources.

[→ Learn More About Network Device Management with Chef](#)



## Device Management



Boost productivity and reduce repetitive work by automating desktop configuration management



Drive efficiency and cut mean time to repair by automating configuration tasks



Centralize fleet visibility and manage multiple platforms with a single tool



Maintain continuous compliance with 'policy as code' and enable rapid vulnerability remediation

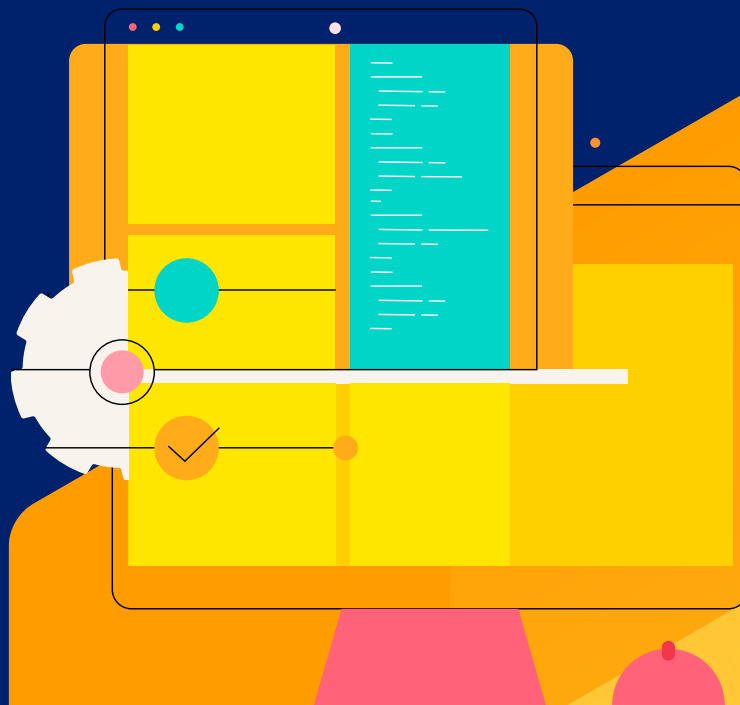
# Manage Configurations and Compliance for Desktops and Laptops at Scale

## Desktop Automation Tools for Infrastructure and Compliance

DevOps teams can use Chef to apply a consistent approach to automating deployment, management and continuous compliance of their IT resources, such as laptops, desktops, kiosks and more, from a centralized location. With Chef, you can gain visibility into the health of your entire fleet from a single pane of glass across operating systems (macOS, Windows, Linux).

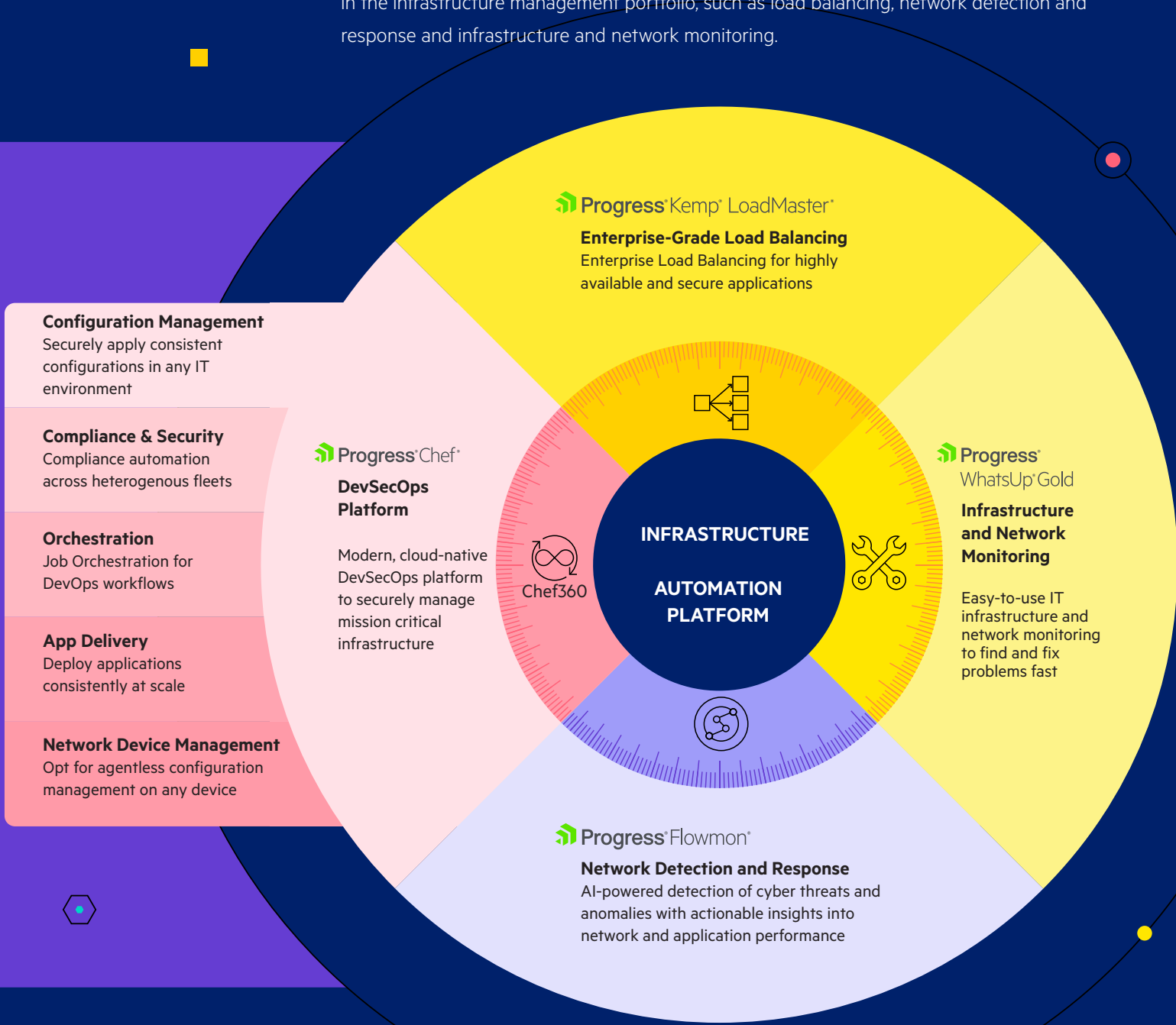


[Learn More About Device Management with Chef](#)



# Progress Infrastructure Platform – A 360° Lens into the Future

Our new capabilities, orchestration and agentless network device management are built on a cloud-native foundation, which will be the cornerstone of all future developments, including our Chef 360 platform. Since Chef is a core component of our infrastructure management portfolio, we are extending the 360 approach to include our other products in the infrastructure management portfolio, such as load balancing, network detection and response and infrastructure and network monitoring.



**Progress<sup>®</sup> Kemp<sup>®</sup> LoadMaster<sup>®</sup>**  
**Enterprise-Grade Load Balancing**  
Enterprise Load Balancing for highly available and secure applications

**Progress<sup>®</sup> Chef<sup>®</sup>**  
**DevSecOps Platform**  
Modern, cloud-native DevSecOps platform to securely manage mission critical infrastructure

**Progress<sup>®</sup> WhatsUp<sup>®</sup> Gold**  
**Infrastructure and Network Monitoring**  
Easy-to-use IT infrastructure and network monitoring to find and fix problems fast

**Progress<sup>®</sup> Flowmon<sup>®</sup>**  
**Network Detection and Response**  
AI-powered detection of cyber threats and anomalies with actionable insights into network and application performance

**Configuration Management**  
Securely apply consistent configurations in any IT environment

**Compliance & Security**  
Compliance automation across heterogenous fleets

**Orchestration**  
Job Orchestration for DevOps workflows

**App Delivery**  
Deploy applications consistently at scale

**Network Device Management**  
Opt for agentless configuration management on any device



[www.progress.com](http://www.progress.com)

## About Progress

Progress (Nasdaq: PRGS) empowers organizations to achieve transformational success in the face of disruptive change. Our software enables our customers to develop, deploy and manage responsible AI-powered applications and experiences with agility and ease. Customers get a trusted provider in Progress, with the products, expertise and vision they need to succeed. Over 4 million developers and technologists at hundreds of thousands of enterprises depend on Progress. Learn more at [www.progress.com](http://www.progress.com)

© 2024 Progress Software Corporation and/or its subsidiaries or affiliates.  
All rights reserved. Rev 2024/10 | RITM0261255

## Worldwide Headquarters

Progress Software Corporation  
15 Wayside Rd, Suite 400, Burlington, MA 01803, USA  
Tel: +1-800-477-6473

-  [facebook.com/getchefdotcom](https://facebook.com/getchefdotcom)
-  [twitter.com/chef](https://twitter.com/chef)
-  [youtube.com/getchef](https://youtube.com/getchef)
-  [linkedin.com/company/chef-software](https://linkedin.com/company/chef-software)
-  [learn.chef.io](https://learn.chef.io)
-  [github.com/chef](https://github.com/chef)
-  [twitch.tv/chefsoftware](https://twitch.tv/chefsoftware)