

## Accela Permitting

Build your community faster from desk to field

Accela Permitting automates and accelerates the permitting process for contractors and residents by moving business processes online. Electronic Document Review, and Accela's mobile apps for inspectors and contractors, speed the permitting process and improve efficiency.

### Electronic document management for faster project approval

Save time and tax dollars by moving your planning and permitting online and away from paper-driven, manual processes. Electronic Document Review works seamlessly with Accela Permitting so you can manage permitting documents in the cloud more efficiently than when done via paper processes.

Residents and contractors can upload plans and documents electronically, and track reviews in real time. Multiple users can view and approve plans simultaneously, getting to project approval faster.

### Mobile apps make inspections more efficient

Keep inspectors productive and out in the field with mobile apps, including Accela Inspector for agency staff and Contractor Central for contractors and citizens, to help speed the permitting process. Citizens keep informed with automated messages throughout, minimizing phone calls to your agency.

### Insights into your permitting data for increased efficiency

With Civic Insight, an add-on product that sits on top of your Land Management data, you can track, measure and analyze your permitting data in a simple and easy-to-use interface. Interactive maps and visualizations make it easy for agency staff and residents to gain insights into what's going on in their communities in real time.

### Used in communities like yours



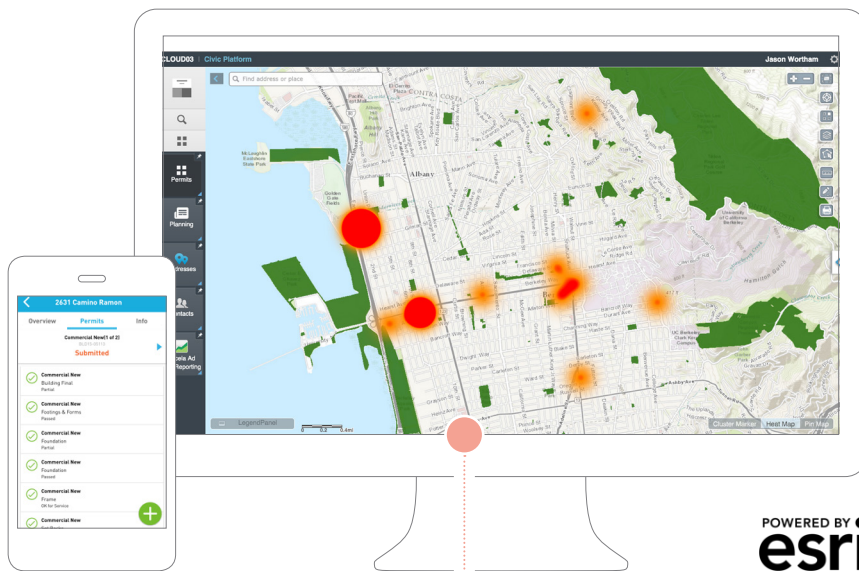
### Permitting

Land Management



### Benefits

- **Save time for staff and citizens** by moving traditional counter services online
- **Enable citizens to apply, track and pay for permits** online
- **Improve customer service** by providing convenient access to agency services
- **Review and approve plans electronically** with Electronic Document Review
- **Leverage the latest mapping technology** and Accela's designation as an Esri Gold Tier Partner
- **Speed the permitting process** with mobile inspections and communications
- **Eliminate the need for IT overhead** and costly hardware and software with a cloud-based or hosted solution



### The Accela Civic Platform advantage

The Accela Civic Platform is a foundation of software solutions for governments of all sizes that powers more connected and informed communities, unifies departments and systems, and provides real-time, actionable data to maximize efficiencies from office to field.

Our cloud-based productivity and citizen engagement offerings range from land, finance, utility billing and CRM to legislative management, right of way, asset management and more. Governments leverage services such as workflow, GIS, mobile tools, dashboards, online payments and web portals to further extend the capabilities of the platform.

Through platform-wide APIs, SDKs and open data, developers are empowered to create complementary solutions that meet the unique needs of any community.

### Features

- Award-winning Esri GIS integration\* produces interactive maps and visualizations, making permitting data easy to understand
- Permitting workflows, including application check-in, plan reviews, fee calculation and collection, sign-offs and task lists help agency staff and citizens speed the permitting process
- Cashiering automates fee collection to accurately assess and collect permitting fees so citizens can pay online or at the counter
- ICC Building Code best practices are built into online customer application processing and payment
- **Accela GIS leverages department geospatial data to provide a geographic view of land and infrastructure information associated with records, such as parcels, permits and inspections**
- Document management provides documents and reports that are populated with the right information
- A citizen portal moves counter and call center services online to provide citizens with an easy and convenient multilingual view of the agency's planning, permitting and building information and activities

\*Accela was named Esri 2013 Partner of the Year for Private Web Application – Federal, State and Local Government

### WANT TO LEARN MORE?

To learn more about Accela Permitting and other Accela offerings, visit us at [www.accela.com/permitting](http://www.accela.com/permitting) or call (888) 722-2352.