

## Tychon Use Cases Overview

Thank you for downloading this TYCHON resource! Carahsoft is the public sector distributor for TYCHON solutions.

To learn how to take the next step toward acquiring TYCHON's solutions, please check out the following resources and information:



For additional resources:  
[carah.io/TYCHONResources](https://carah.io/TYCHONResources)



For upcoming events:  
[carah.io/TYCHONEvents](https://carah.io/TYCHONEvents)



For additional TYCHON solutions:  
[carah.io/TYCHONProducts](https://carah.io/TYCHONProducts)



For additional Cybersecurity solutions:  
[carah.io/Cybersecurity](https://carah.io/Cybersecurity)



To set up a meeting:  
[TYCHON@carahsoft.com](mailto:TYCHON@carahsoft.com)  
844-445-5688



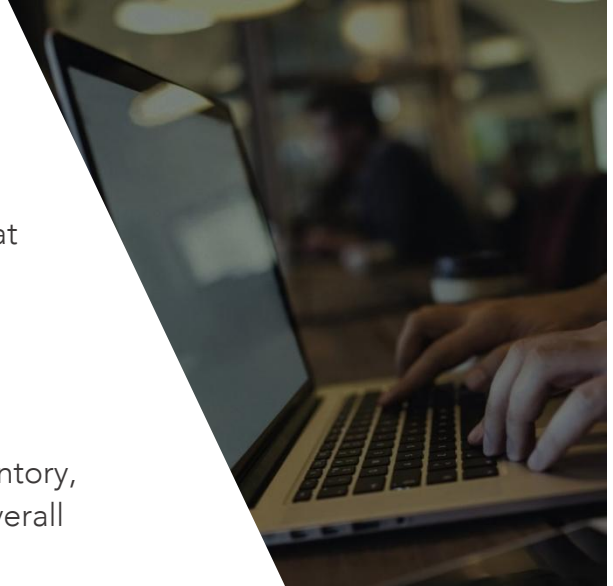
To purchase, check out the contract vehicles available for procurement:  
[carah.io/TYCHONContracts](https://carah.io/TYCHONContracts)

# TYCHON

## TYCHON Use Cases Overview

TYCHON Enterprise is an endpoint analytics and remediation platform designed to be the 'gold source' for enterprise endpoint data.

- Visibility, monitoring, and query and response at unparalleled speed and scale
- Automated dashboards for instant visibility and situational awareness
- Track privileged users, Web PKI and DMZ, inventory, system authorization, security, patching, and overall compliance



Comprehensive  
& Customizable  
Endpoint  
Datasets to  
*make better  
decisions.*



Attack Surface Management



Comply to Connect



Cyber Hygiene



Enterprise Endpoint Management



Incident Response & Hunt Operations



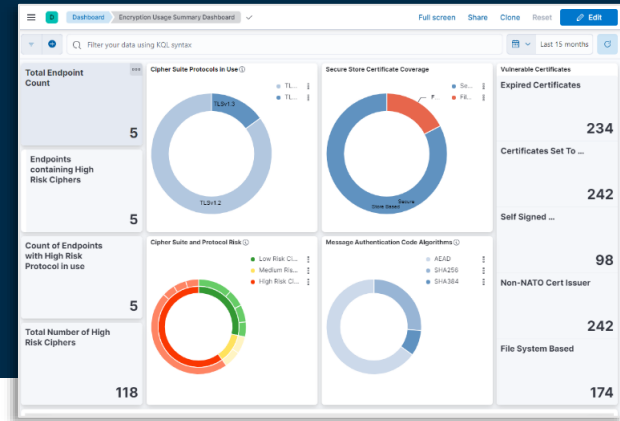
Quantum Readiness



Vulnerability & Patch Management

## TYCHON Enterprise Use Cases

*Get near real-time visibility into every endpoint across your enterprise, while minimizing network usage and leveraging existing investments.*



### Attack Surface Management

Achieve continuous discovery, monitoring, evaluation, and remediation of attack surfaces with built in analytics, reports, and dashboards.



### Comply to Connect

Record, index, and monitor endpoints in real-time, quarantine outdated OSs, identify patch vulnerabilities, and more to validate C2C compliance.



### Cyber Hygiene

Manage system health, reduce vulnerabilities, and improve online security with real-time endpoint visibility, proactive monitoring, and validation.



### Enterprise Endpoint Management

Retrieve intelligence from endpoints at speed and scale using natural language questions and PowerShell scripts for comprehensive real-time visibility.



### Incident Response & Hunt Operations

Proactively identify suspicious activities, providing more robust anomaly detection and endpoint visibility to remove security blind spots on your network.



### Quantum Readiness

Rapidly gather, inventory, and prioritize cryptographic systems. Customize, manage, and enforce policies to address your most vulnerable assets first.



### Vulnerability & Patch Management

Monitor all vulnerabilities with a CVE number using OVAL and XCCDF. Use delta based checks to reduce scan time and risk analysis to eliminate exposures and uncertainty.

