



## Jaspersoft Studio

The industry's most advanced design environment

Thank you for downloading this Jaspersoft data sheet. Carahsoft is the partner for Jaspersoft solutions available via NASA SEWP V, ITES-SW2 and other contract vehicles.

To learn how to take the next step toward acquiring Jaspersoft's solutions, please check out the following resources and information:



For additional Jaspersoft resources:  
[carah.io/jaspersoftresources](https://carah.io/jaspersoftresources)



For upcoming events:  
[carah.io/jaspersoft.events](https://carah.io/jaspersoft.events)



For additional Jaspersoft solutions:  
[carah.io/jaspersoft.solutions](https://carah.io/jaspersoft.solutions)



For additional CSG solutions:  
[carah.io/csg-solutions](https://carah.io/csg-solutions)



To set up a meeting:  
[CSG@carahsoft.com](mailto:CSG@carahsoft.com)  
(571) 590-6010



To purchase, check out the contract vehicles available for procurement:  
[carah.io/jaspersoft.contracts](https://carah.io/jaspersoft.contracts)

# Jaspersoft® Studio

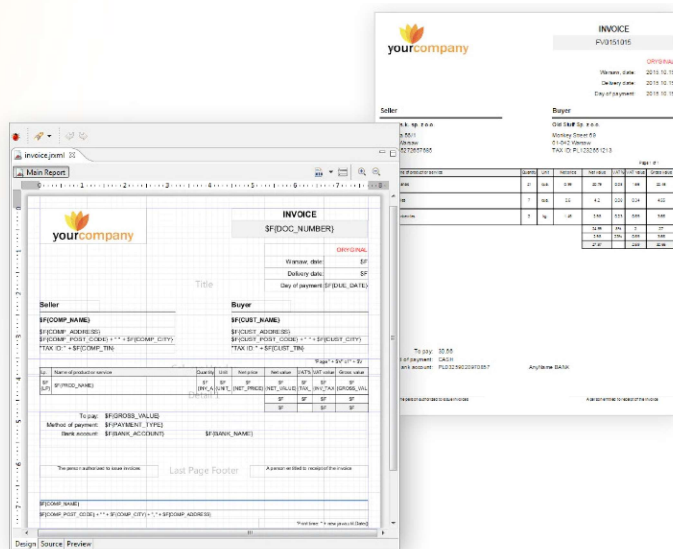
## The industry's most advanced design environment

Part of our commercial edition, Jaspersoft Studio is an Eclipse-based report and visualization designer for JasperReports. Using this design tool, users can create sophisticated layouts containing 50+ chart types, crosstabs, custom visualizations, images, maps, sub-reports, and much more with animation, interactive legends, and navigation through various combinations of aggregate and detailed data levels. The extensible architecture also allows developers to tap into libraries and functionality from third-party software.

### Key features

#### Pixel-perfect reporting

Report developers can place items on screen exactly as they want them to appear in the final pixel-perfect report regardless of output format. Users can place on-screen items using snap-to or an automated grid layout. Jaspersoft Studio produces the reports in an XML format, known as JRXML, which is the same format used by JasperReports.

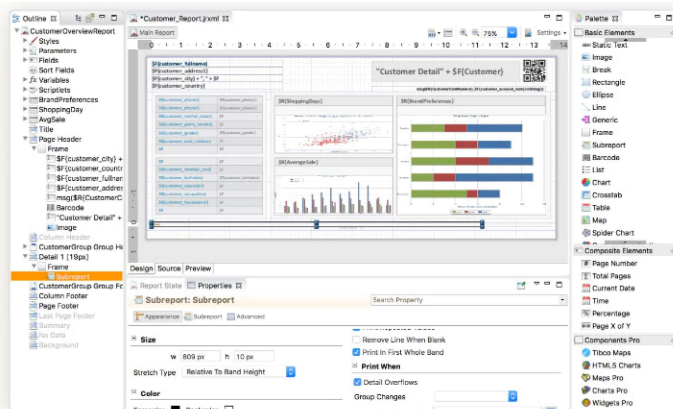


## Powerful expression editor

Many settings in a report are defined by formulas, such as conditions that hide an element or define special calculations or text processing. Formulas can be written in Java, JavaScript or Groovy and provides a powerful way for developers to gain control over report functionality. Expressions and datasource queries can use report parameters to personalize the report output and enforce data governance based on the logged-in user name. These dynamic parameters can also help to improve report performance by querying smaller sets of data for retrieval. These formulas can be written by expert programmers and deployed to many reports.

## Re-use, not recreate

The program promotes reusability of styles through externalized style sheets. Users can design once and re-use all reports to maintain a consistent look and feel. For example, the same report design might be viewed on a web portal by one set of users, exported to Excel for another group, emailed by the JasperReports Server scheduler to yet another team, and consumed through an API by a third-party tool. Deployments with many reports can make changes to the external style sheet just once to update all assets.



## Multi-page reports

Jaspersoft Studio Report Books are multiple reports bundled into a single object to create multi-page documents. A report book can compile multiple JRXML files with different page formats, and rather than using the band paradigm to gather report elements, it defines several sections into which book parts—reports, cover pages, and tables of contents—are organized.

## Flexible data visualizations

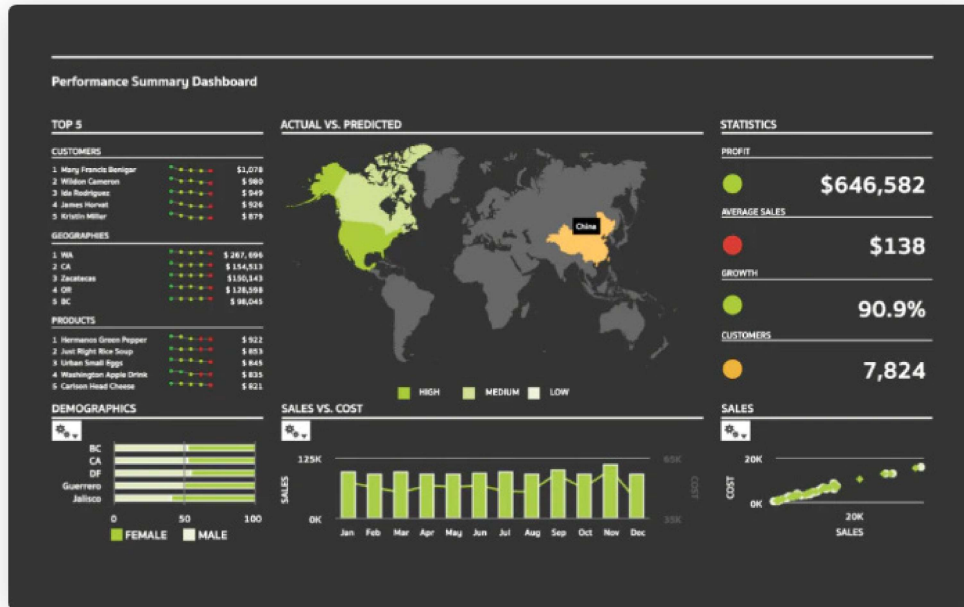
### HTML5 charts

Visualize data with interactive and customizable charts, including area, bar, bubble, column, dual-level pie, line, multi-axis, pie, scatter, spider, spline, stacked area, and time series.

HTML5 charts can be customized using thousands of properties for pixel-level control over every visualization.

## Maps

Create interactive map visualizations with HTML 5 maps and use custom shapes, layers, and markers to display. Users can also easily access Google Maps using their API key.



## Widgets

Include bulbs, cylinders, columns, funnels, Gantt Charts, gauges, sparklines, and thermometers.

## Custom visualizations

Via the Custom Visualization Component, any dynamically generated SVG visualization can be supported via third-party Javascript libraries including D3.js, Highcharts, and Charts.js.

## Interactive tables, crosstabs, and elements

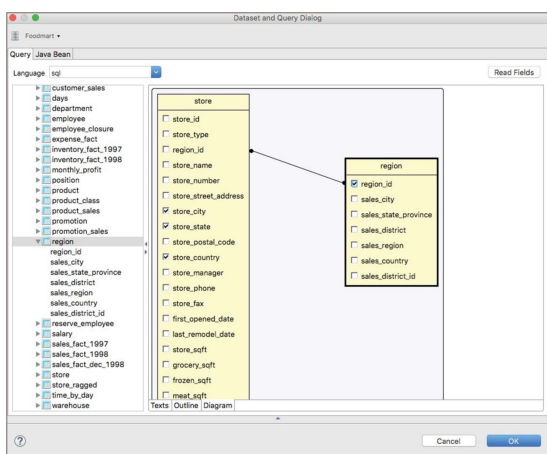
To build beautiful, useful, and complete reports, Jaspersoft Studio comes with An entire palette of components, letting a user visually design any report with as intricate a design as needed.. For example, tables with their own dedicated datasets can be added to reports and made completely interactive when deployed to a compatible viewer like JasperReports Server or exported to a flat table in exports like CSV. Crosstabs allow numeric calculations on large amounts of data and can also be driven by sub-datasets.

Images are also supported in many different formats, including SVG, loaded via URL, or even stored in a database as a BLOB. Decorative frames, lines, and ellipses can be drawn easily to add style and structure to reports.


One design can be exported to multiple formats. In this case, a pixel-perfect report has been exported as both a PDF and an Excel file that includes formulas.

## Widest selection of data sources

Users can access data through a variety of sources including JDBC, big data (such as MongoDB, Hive or Google BigQuery), XLS, CSV, JavaBeans, JSON or XML documents or through REST requests, Hibernate, XML/A, as well as custom sources. Data source configuration is done visually to help with complex joins and parameterized queries.



SQL Query Editor MongoDB Query Editor



**Monthly Profit Report**

Demo

This is an example of exporting out to pixel perfect formats like PDF and also to XLS where we remove images, floating headers, groups and show the calculation for Cost in formula

Sales	Cost	Profit	Date
<b>January</b>			
\$11,737.29	\$4,670.97	\$7,066.32	Jan 1, 2012
\$19,499.7	\$7,790.35	\$11,709.35	Jan 2, 2012
\$14,302.7	\$5,717.17	\$8,585.53	Jan 2, 2012
<b>February</b>			
\$21,728.8	\$8,647.93	\$13,080.87	Feb 1, 2012
\$9,675.34	\$3,886.33	\$5,789.01	Feb 3, 2012
\$12,654.65	\$5,065.41	\$7,589.24	Feb 3, 2012
<b>March</b>			
\$22,054.36	\$8,801.8	\$13,252.56	Mar 1, 2012
\$11,783.26	\$4,694.71	\$7,088.55	Mar 2, 2012
\$16,192.25	\$6,477.57	\$9,714.68	Mar 2, 2012
<b>Anril</b>			

Because each data source type has its own query language, several query editors are available:

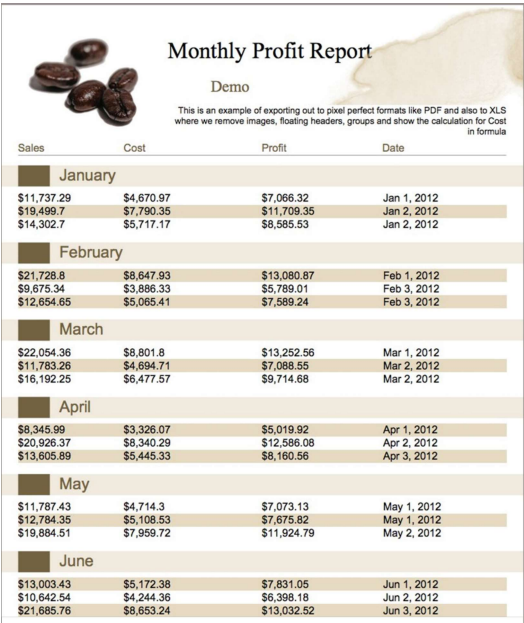
Datasource type	Description	Examples
<b>SQL (JDBC/JNDI)</b>	Traditional, columnar, or big data databases with SQL as a query language	Apache Hadoop, Impala, MySQL, Oracle, Postgres, Redshift, SQL Server, Teradata
<b>Files</b>	Delimited plain text files, spreadsheets	CSV, Excel, JSON, TSV, XML
<b>NoSQL</b>	Flexible non-columnar data storage with proprietary query languages	Cassandra, MongoDB
<b>Files</b>	Delimited plain text files, spreadsheets	CSV, Excel, JSON, TSV, XML

<b>Domain</b>	Jaspersoft metadata layer	Domain web service
<b>Custom/Java</b>	Any JasperReports custom data source or Javadata source	JavaBeans, POJO
<b>Web Services</b>	HTTP or file-based web services	JSON and XML via REST
<b>OLAP</b>	OnLine Analytical Processing cubes	XML/A Sources, Mondrian

Once data enters the tool, it can be further transformed using variables and groups, and each field can use custom logic to create the desired data transformation or projection. Each report contains a main dataset and then supports any number of sub-datasets for the report to loop.

## Export to any format for maximum reusability

Powerful formatting capabilities allow users to publish reports as XLSX, DOCX, PPTX, PDF, RTF, XML, HTML, XHTML, JSON, CSV, text, or OpenOffice and provide design time hints that help produce friendly outputs for each format.



**Monthly Profit Report**  
Demo

This is an example of exporting out to pixel perfect formats like PDF and also to XLS where we remove images, floating headers, groups and show the calculation for Cost in formula

Sales	Cost	Profit	Date
<b>January</b>			
\$11,737.29	\$4,670.37	\$7,066.32	Jan 1, 2012
\$19,499.7	\$7,790.35	\$11,709.35	Jan 2, 2012
\$14,302.7	\$5,717.17	\$8,585.53	Jan 2, 2012
<b>February</b>			
\$21,728.8	\$8,647.93	\$13,080.87	Feb 1, 2012
\$9,675.34	\$3,886.33	\$5,789.01	Feb 3, 2012
\$12,654.65	\$5,065.41	\$7,589.24	Feb 3, 2012
<b>March</b>			
\$22,054.36	\$8,801.8	\$13,252.56	Mar 1, 2012
\$11,783.26	\$4,694.71	\$7,088.55	Mar 2, 2012
\$16,192.25	\$6,477.57	\$9,714.68	Mar 2, 2012
<b>April</b>			
\$8,345.99	\$3,326.07	\$5,019.92	Apr 1, 2012
\$20,926.37	\$8,340.29	\$12,586.08	Apr 2, 2012
\$13,605.89	\$5,445.33	\$8,160.56	Apr 3, 2012
<b>May</b>			
\$11,787.43	\$4,714.3	\$7,073.13	May 1, 2012
\$12,784.35	\$5,108.53	\$7,675.82	May 1, 2012
\$19,884.51	\$7,959.72	\$11,924.79	May 2, 2012
<b>June</b>			
\$13,003.43	\$5,172.38	\$7,831.05	Jun 1, 2012
\$10,642.54	\$4,244.36	\$6,398.18	Jun 2, 2012
\$21,685.76	\$8,653.24	\$13,032.52	Jun 3, 2012

	A	B	C	E
1	Sales	Cost	Profit	Date
2	\$11,737.29	\$11,737.29	\$7,066.32	Jan 1, 2012
3	\$19,499.7	\$19,499.7	\$11,709.35	Jan 2, 2012
4	\$14,302.7	\$14,302.7	\$8,585.53	Jan 2, 2012
5	\$21,728.8	\$21,728.8	\$13,080.87	Feb 1, 2012
6	\$9,675.34	\$9,675.34	\$5,789.01	Feb 3, 2012
7	\$12,654.65	\$12,654.65	\$7,589.24	Feb 3, 2012
8	\$22,054.36	\$22,054.36	\$13,252.56	Mar 1, 2012
9	\$11,783.26	\$11,783.26	\$7,088.55	Mar 2, 2012
10	\$16,192.25	\$16,192.25	\$9,714.68	Mar 2, 2012
11	\$8,345.99	\$8,345.99	\$5,019.92	Apr 1, 2012
12	\$20,926.37	\$20,926.37	\$12,586.08	Apr 2, 2012
13	\$13,605.89	\$13,605.89	\$8,160.56	Apr 3, 2012
14	\$11,787.43	\$11,787.43	\$7,073.13	May 1, 2012
15	\$12,784.35	\$12,784.35	\$7,675.82	May 1, 2012
16	\$19,884.51	\$19,884.51	\$11,924.79	May 2, 2012
17	\$13,003.43	\$13,003.43	\$7,831.05	Jun 1, 2012
18	\$10,642.54	\$10,642.54	\$6,398.18	Jun 2, 2012
19	\$21,685.76	\$21,685.76	\$13,032.52	Jun 3, 2012
20	\$22,426.08	\$22,426.08	\$13,467.9	Jul 1, 2012
21	\$11,599.41	\$11,599.41	\$6,998.47	Jul 1, 2012
22	\$16,221.39	\$16,221.39	\$9,774.71	Jul 3, 2012
23	\$14,932.19	\$14,932.19	\$8,992.79	Aug 1, 2012
24	\$22,294.44	\$22,294.44	\$13,376.05	Aug 3, 2012
25	\$8,972.41	\$8,972.41	\$5,394.24	Aug 4, 2012
26	\$10,686.66	\$10,686.66	\$6,437.73	Sep 1, 2012
27	\$20,276.86	\$20,276.86	\$12,195.16	Sep 2, 2012
28	\$12,862.45	\$12,862.45	\$7,729.96	Sep 3, 2012
29	\$20,285.73	\$20,285.73	\$12,190.58	Oct 1, 2012
30	\$13,077.79	\$13,077.79	\$7,849.66	Oct 2, 2012
31	\$8,978.75	\$8,978.75	\$5,400.03	Oct 2, 2012
32	\$15,285.04	\$15,285.04	\$9,169.31	Nov 1, 2012
33	\$26,152.76	\$26,152.76	\$15,689.64	Nov 2, 2012
34	\$11,925.91	\$11,925.91	\$7,147.	Nov 4, 2012
35	\$16,839.01	\$16,839.01	\$10,088.38	Dec 1, 2012
36	\$26,577.85	\$26,577.85	\$15,963.41	Dec 2, 2012
37	\$13,548.78	\$13,548.78	\$8,167.72	Dec 4, 2012

## Publishing reports

Jaspersoft Studio is used to create standalone reports that can be viewed in Java applications that embed the JasperReports Library, or reports can easily be published with one click to the JasperReports Server web application or JasperReports IO for end user consumption.

When working with Studio, developers have the ability to change the project type or report repository type. This gives you access to all of our JasperReports execution engines to simulate all three environments on your local machine. These project options provide folders that contain all of your reporting resources that allow you to create and test the report templates to verify the best fit for your application without the full download of the platform.

To facilitate publishing to JasperReports Server, an easy-to-use publishing workflow is included inside the tool. Simply authenticate to JasperReports Server and publish data sources, fonts, images, input controls, report definitions, and any other resource that you need for your reports and visualizations.

Start a 30-day trial of Jaspersoft commercial edition today at [www.jaspersoft.com/trial](http://www.jaspersoft.com/trial).



**Global Headquarters**  
851 W Cypress Creek Rd.  
Fort Lauderdale  
FL 33309  
+1 650-846-1000 TEL  
+1 800-420-8450  
+1 650-846-1005 FAX  
[www.jaspersoft.com](http://www.jaspersoft.com)

Jaspersoft is a leading provider of developer-grade reporting software, with over 600,000 downloads per month globally. Jaspersoft provides developers and business users the ability to create, embed and distribute highly interactive, pixel-perfect reports, ad hoc reports, dashboards and analytics into their applications to enhance the end-user experience. These tools give Jaspersoft's over 1,100 customers around the world the ability to meet their reporting requirements, gain insight from multiple data sources and ultimately make better decisions. For more information, visit [www.jaspersoft.com](http://www.jaspersoft.com).

© 2024, Cloud Software Group, Inc. All rights reserved. Jaspersoft and the Jaspersoft logo are trademarks or registered trademarks of Cloud Software Group, Inc. or its subsidiaries in the United States and/or other countries. All other product and company names and marks in this document are the property of their respective owners and mentioned for identification purposes only.  
05Sep2024