

The background is a dark blue gradient with abstract white and light blue circular patterns. On the left side, there is a large circular scale with degree markings from 40 to 260. Several concentric circles and arcs are scattered across the image, some with arrows indicating a clockwise direction. The overall aesthetic is technical and modern.

# GETTING STARTED WITH ADOBE CAPTIVATE

2017 RELEASE

# PAUL WILSON

- eLearning Designer Developer  
[CaptiveTeacher.com](http://CaptiveTeacher.com)
- YouTuber  
[Youtube.com/PaulWilsonLearning](https://Youtube.com/PaulWilsonLearning)



# NEW PROJECT SELECTION

- Choose what type of project you want to create



# SOFTWARE SIMULATION



- Interactive software capture
  - Demos
  - Assessments
  - Training

# VIDEO DEMO

CREATE SOFTWARE MOVIES  
(EXPLAINER VIDEOS)

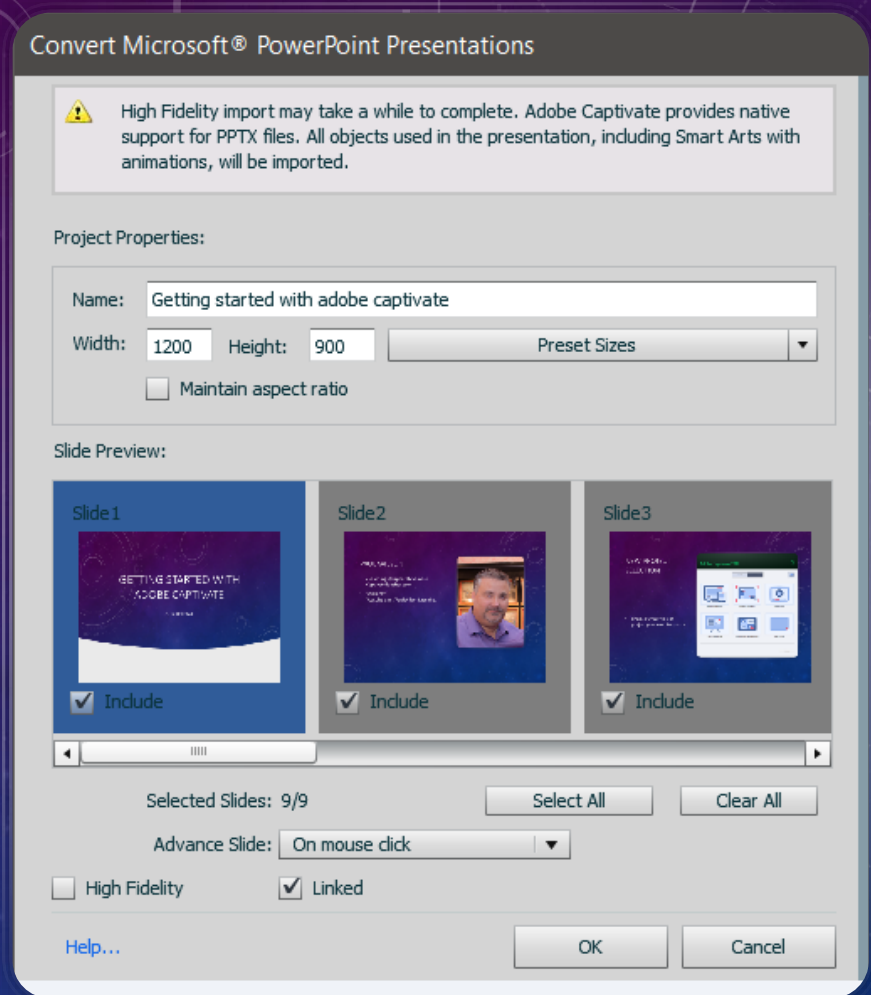
DEVICE DEMO (MAC OS)







# FROM POWERPOINT



RECOMMENDED FOR NEW ADOBE CAPTIVATE USERS WHO ARE JUST GETTING STARTED

# FROM CAPTIVATE DRAFT

ADOBE'S STORYBOARDING MOBILE  
APPLICATION



# BLANK PROJECT

- Fixed resolution
- Fixed aspect ratio
- Most eLearning



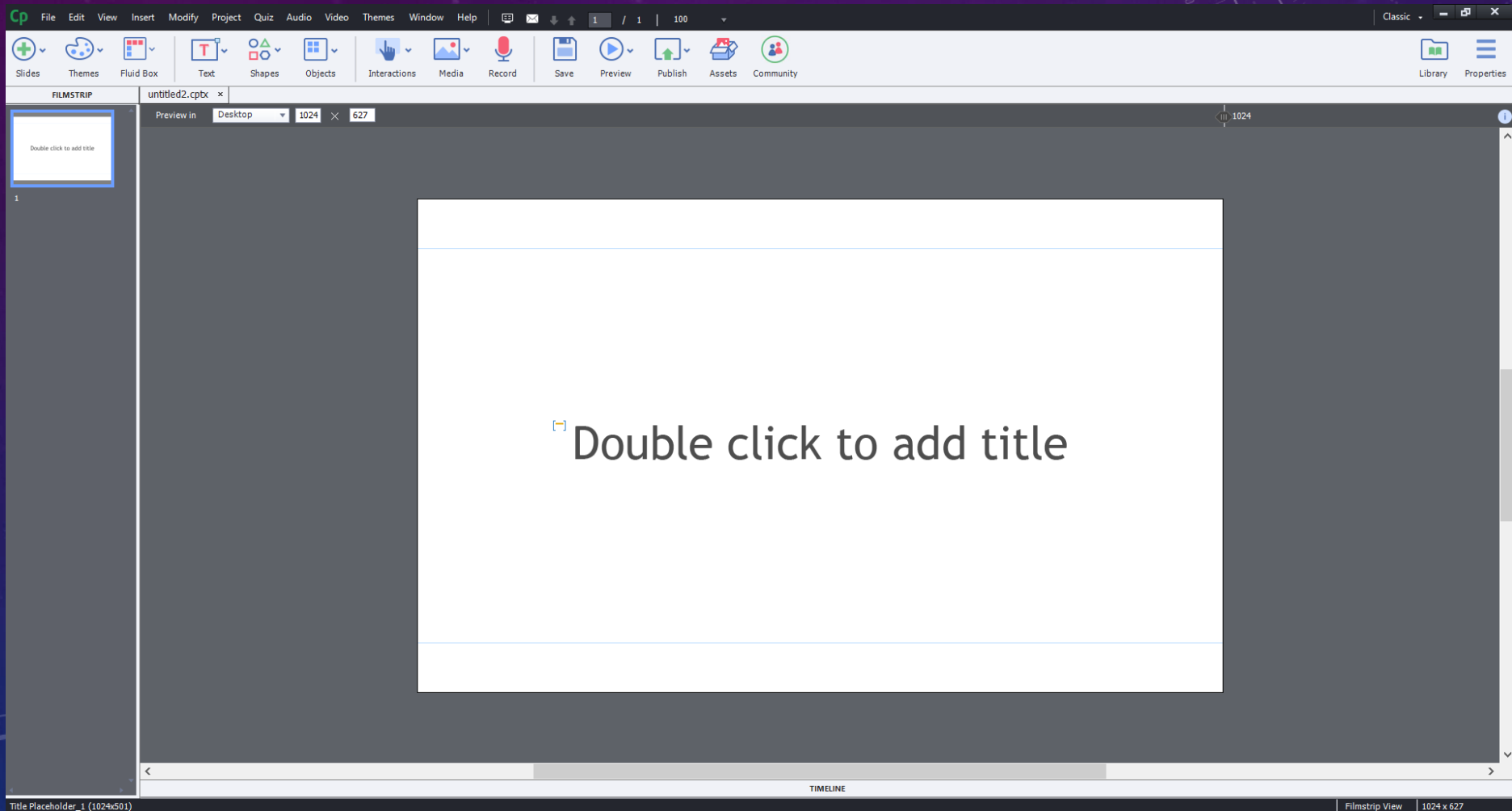


# RESPONSIVE PROJECT



- Ideal for mobile devices like tablets & smartphones
- Fluid boxes
- Cp8 & 9 Breakpoint style

# CAPTIVATE INTERFACE



## FILMSTRIP

Double click to add title

1

2

### Multiple Choice

Type MC questions

- ☐ A) Type MC questions
- ☐ B) Type MC questions

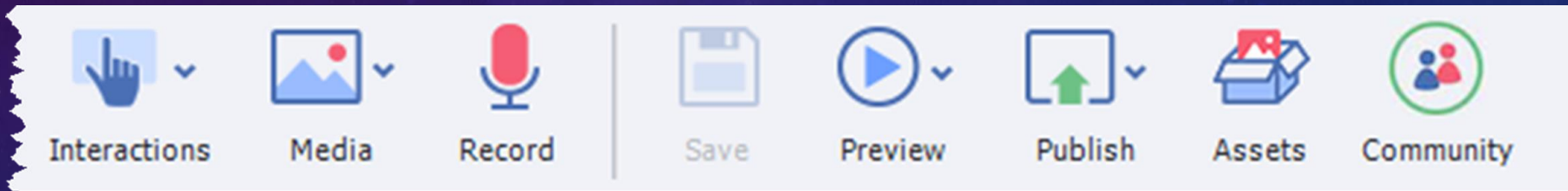
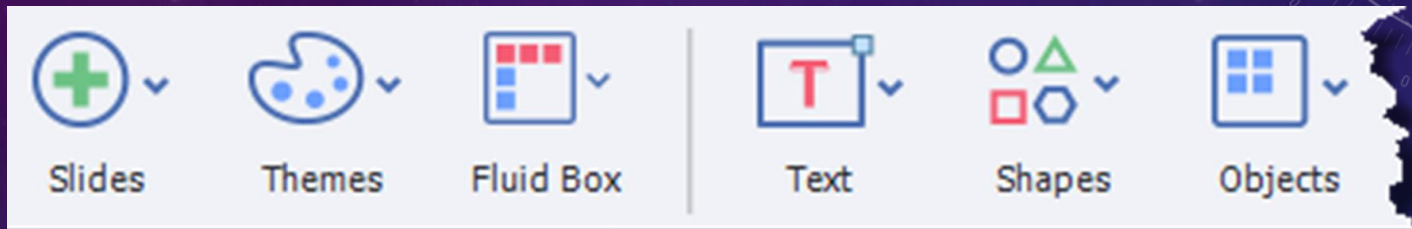
Next Previous Cancel

3

# FILMSTRIP

- Navigation
- Slide sorting

# TOOLBAR







## Master Slide

**MCQ,T/F,FIB,Sequence**

Reset Master Slide

Master slide view

Style

Actions

Options

☒ Allow Gesture Navigation

Background

Master Slide Background

☐ Master Slide Objects On Top

Slide Duration : 3 sec

☐ Preview Height 627 px

Slide Height : 627 px

Minimum Font Size 14

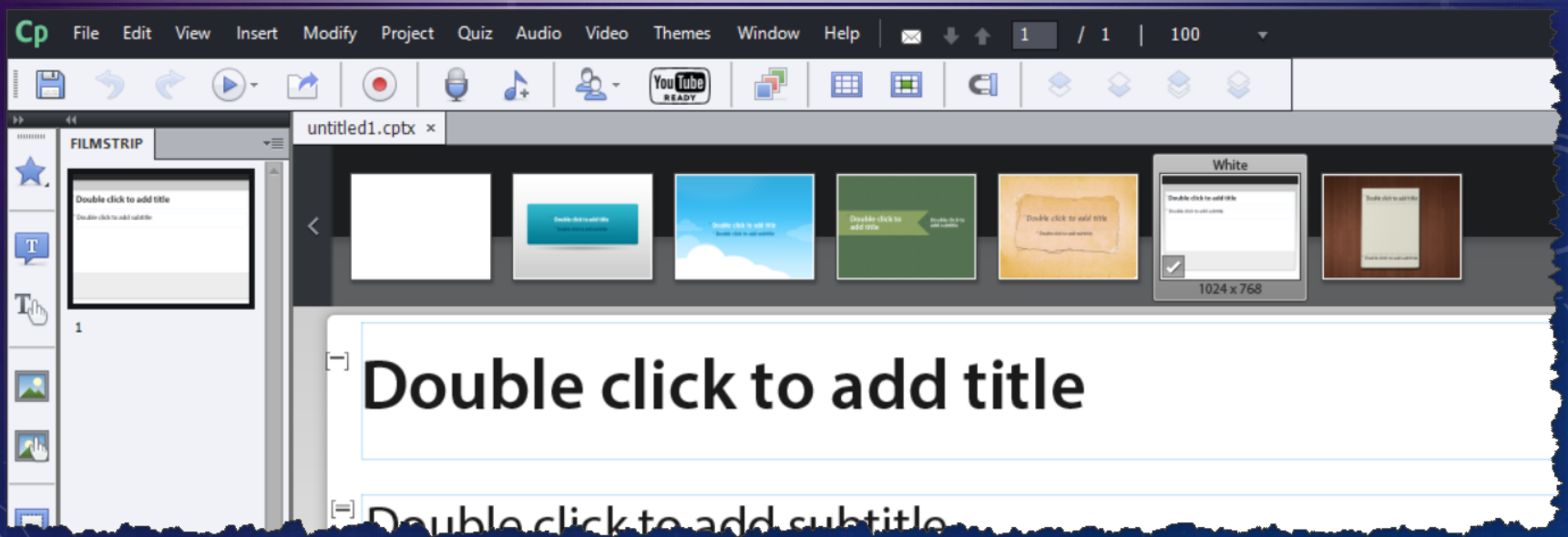
☐ Enable Uniform Text Scaling

# PROPERTIES PANELS

- Parameters for selected items
- Appear & Disappear as needed
- Selected from the Window drop down

# THEMES

- Introduced in version 6
- Applying a series of object styles, master slides, images to projects
- Using themes can contribute to the rapid development of eLearning
- Most themes are not applicable within a corporate environment



## Object Style Manager - Getting Started with Adobe Captivate.cptx [ Theme - Blank ]

► Standard Objects  
► Quizzing Objects  
Runtime Dialog

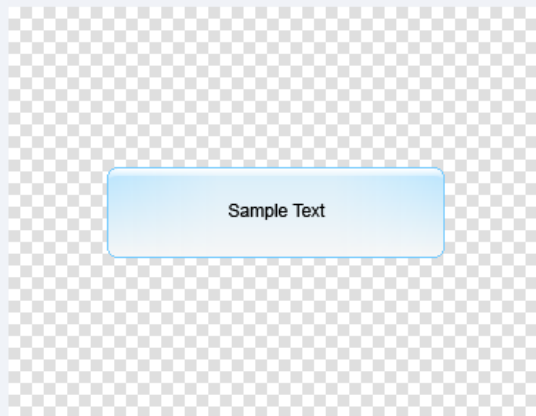
### [Default Caption S...

[Default Capture Ca...  
[Default Success Ca...  
[Default Failure Cap...  
[Default Hint Capti...  
[Default Partial Cor...

Clone

Delete...

Styles Preview



Name: [Default Caption Style]

☒ Set As Default

Caption

Caption Type: HaloBlue

Text Format

Family: No Font Selected

Style: No Style Selected

Size: 16

Format: **B** *I* U

Color: [Black]

Highlight: [Red]

Align: [Left] [Center] [Right]

Indentation: [0] [1] [2]

Bullets: [List Icon]

Spacing: 1

Margins: [0] [0] [0] [0]

Transition

Effect: No Transition

Help...

Import...

Export...

Apply

OK

Cancel

# OBJECT STYLES

- Contain many of the property parameters that you can set yourself
- Dozens of elements can be applied to objects very rapidly

ACCESS THE FILES FOR THIS PRESENTATION

<https://captivateteacher.com/demo>



SUBSCRIBE TO MY  
YOUTUBE CHANNEL

[YOUTUBE.COM/PAULWILSONLEARNING](https://www.youtube.com/paulwilsonlearning)

